

NO. A-23177-1

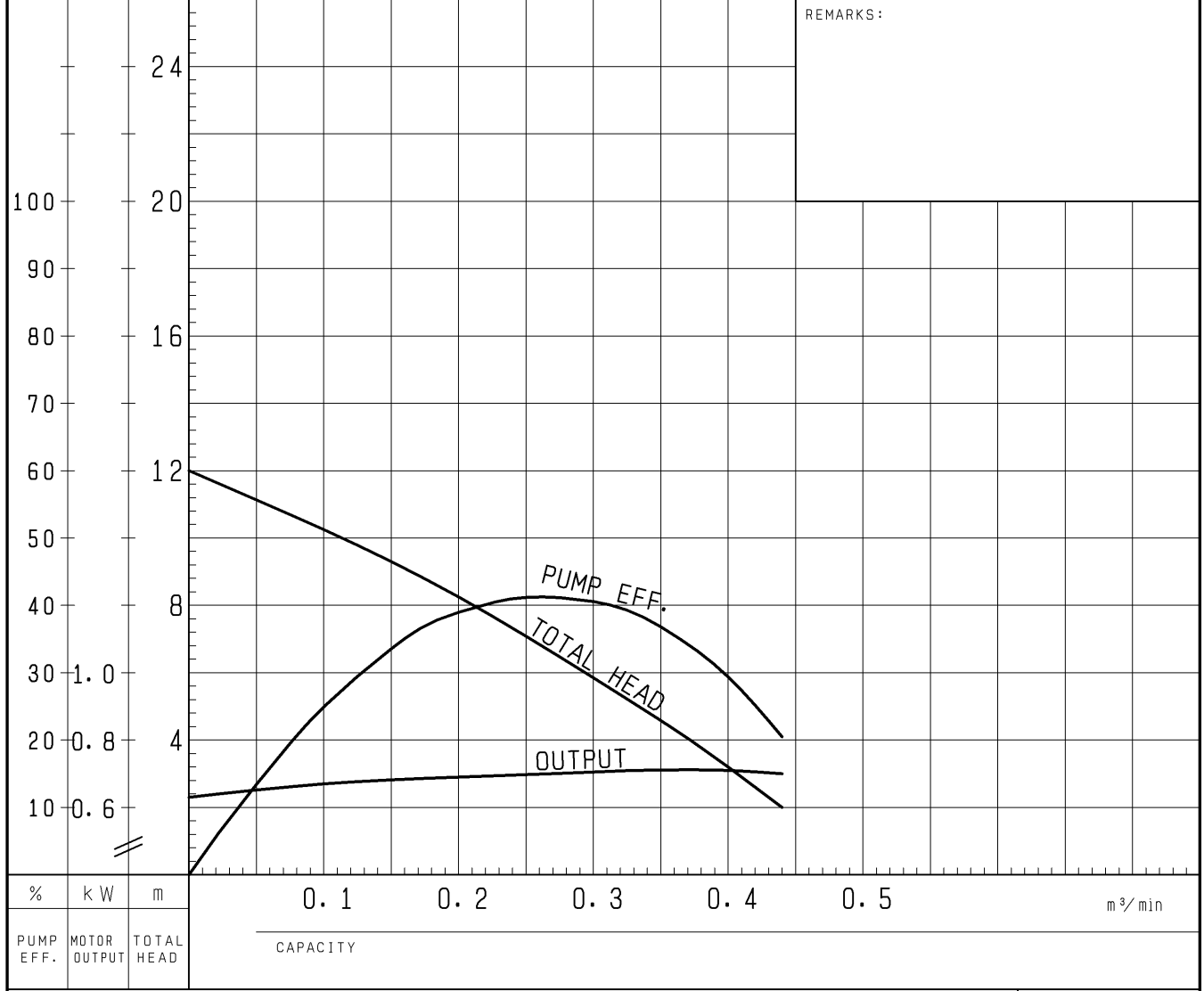
# PUMP PERFORMANCE CURVES

TYPE Submersible Sewage & Wastewater Pump	MODEL (TOS) 50B2.75 -53 (TOS) 50BA2.75 -53 (TOS) 50BW2.75 -53	FREQUENCY 50 Hz
--	---	--------------------

CUSTOMER'S NAME \_\_\_\_\_

EQUIPMENT TITLE \_\_\_\_\_ NO. \_\_\_\_\_

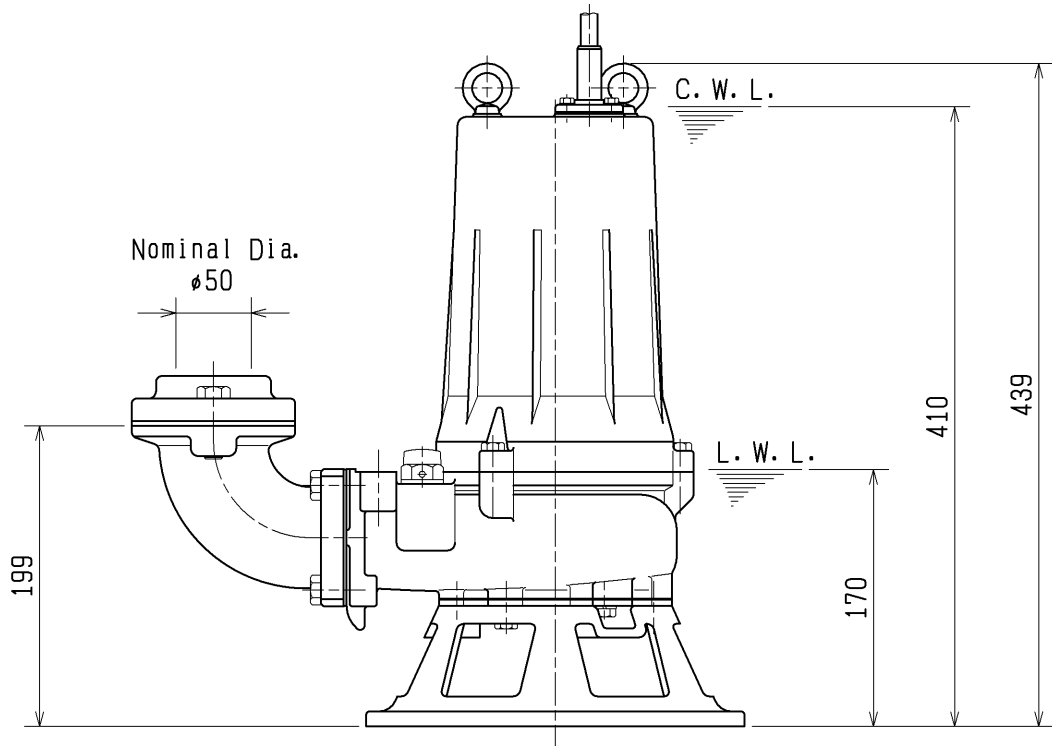
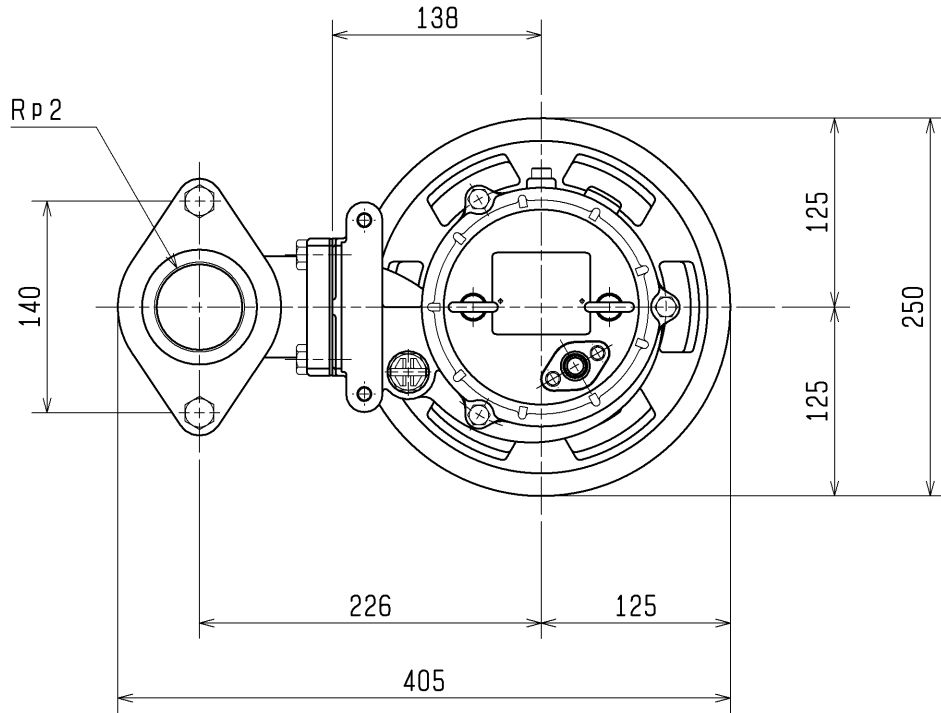
	STANDARD SPECIFICATIONS	REQUIRED SPECIFICATIONS
DISCHARGE BORE	50 mm	mm
TOTAL HEAD	MAX. 12 m	m
CAPACITY	MAX. 0.44 m <sup>3</sup> /min	m <sup>3</sup> /min
MOTOR OUTPUT	0.75 kW	kW
PHASE x VOLTAGE	3 $\phi$ x V	$\phi$ x V
CURRENT	A	A
POLES / REVOLUTION	2 P / S. S. 3000 min <sup>-1</sup>	P / min <sup>-1</sup>
STARTING METHOD	DIRECT ON LINE	
INSULATION CLASS	E	



TSURUMI MFG. CO., LTD.

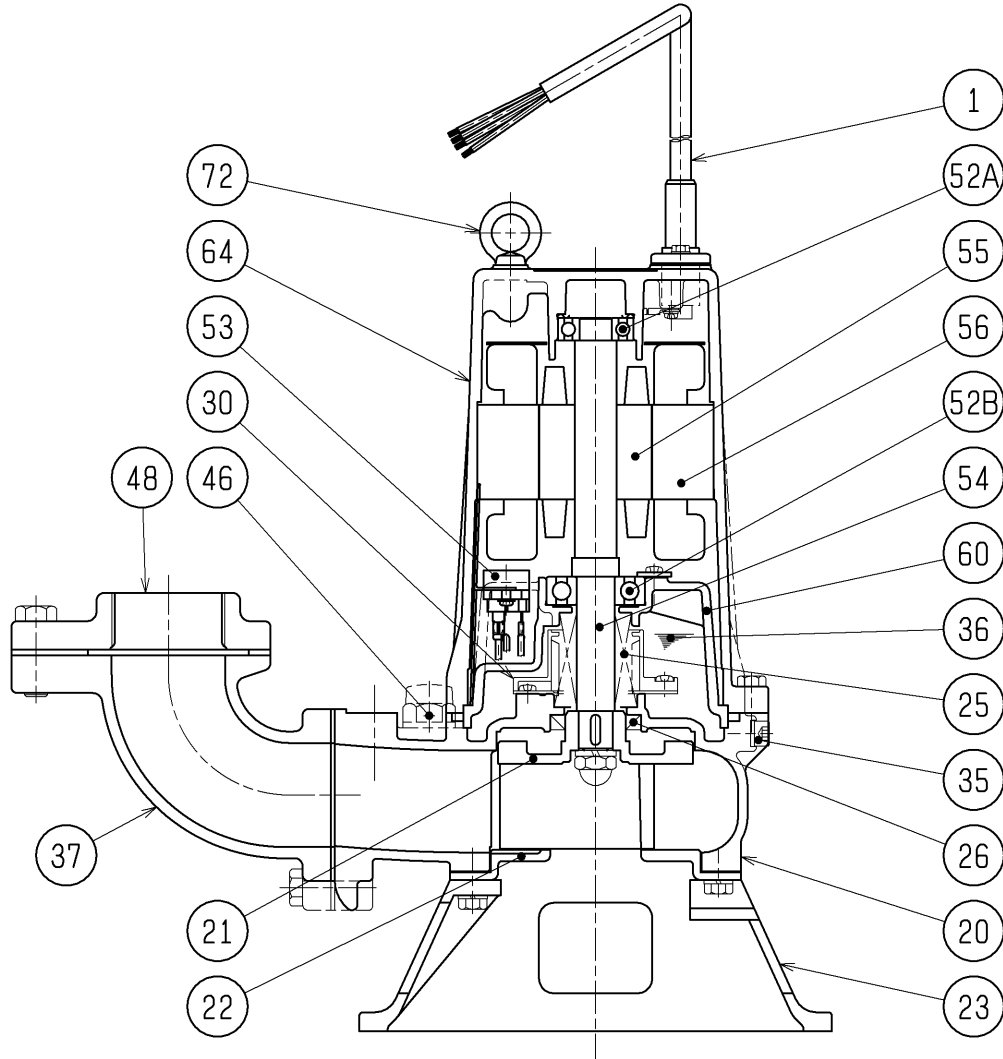
DIMENSION DRAWING		No.	No. A-23181-1
TYPE	Submersible Sewage & Wastewater Pump	MODEL	50B2.75 -53/63

Approximate Weight(\*)  
25kg  
\*excluding cable



C.W.L.:Continuous running Water Level  
L.W.L.:Lowest running Water Level

<b>SECTIONAL DRAWING</b>		No.	No. A-23183-1
TYPE	Submersible Sewage & Wastewater Pump	MODEL	50B2.75 -53/63



REQ. SPECIFICATION	
-----	
-----	

No.	DESCRIPTION	QTY	MATERIAL / NOTE	No.	DESCRIPTION	QTY	MATERIAL / NOTE
1	Cable	1	PVC Sheath	48	Screwed Flange	1	Gray Iron Casting
20	Pump Casing	1	Gray Iron Casting	52A	Upper Bearing	1	6203ZZC3
21	Impeller	1	Gray Iron Casting	52B	Lower Bearing	1	6304ZZC3
22	Suction Cover	1	Gray Iron Casting	53	Motor Protector	1	
23	Strainer Stand	1	Gray Iron Casting	54	Shaft	1	Stainless Steel 420J2
25	Mechanical Seal	1	H-20A	55	Rotor	1	
26	Oil Seal	1	TC32488	56	Stator	1	
30	Oil Lifter	1	Plastic	60	Bearing Housing	1	Gray Iron Casting
35	Oil Plug	1	Stainless Steel 304	64	Motor Frame	1	Gray Iron Casting
36	Lubricant		Turbine Oil (ISO VG32)	72	Eye Bolt	2	Stainless Steel 304
37	Discharge Bend	1	Gray Iron Casting				
46	Air Release Valve	1	Nylon				