

NO. A-19576-1

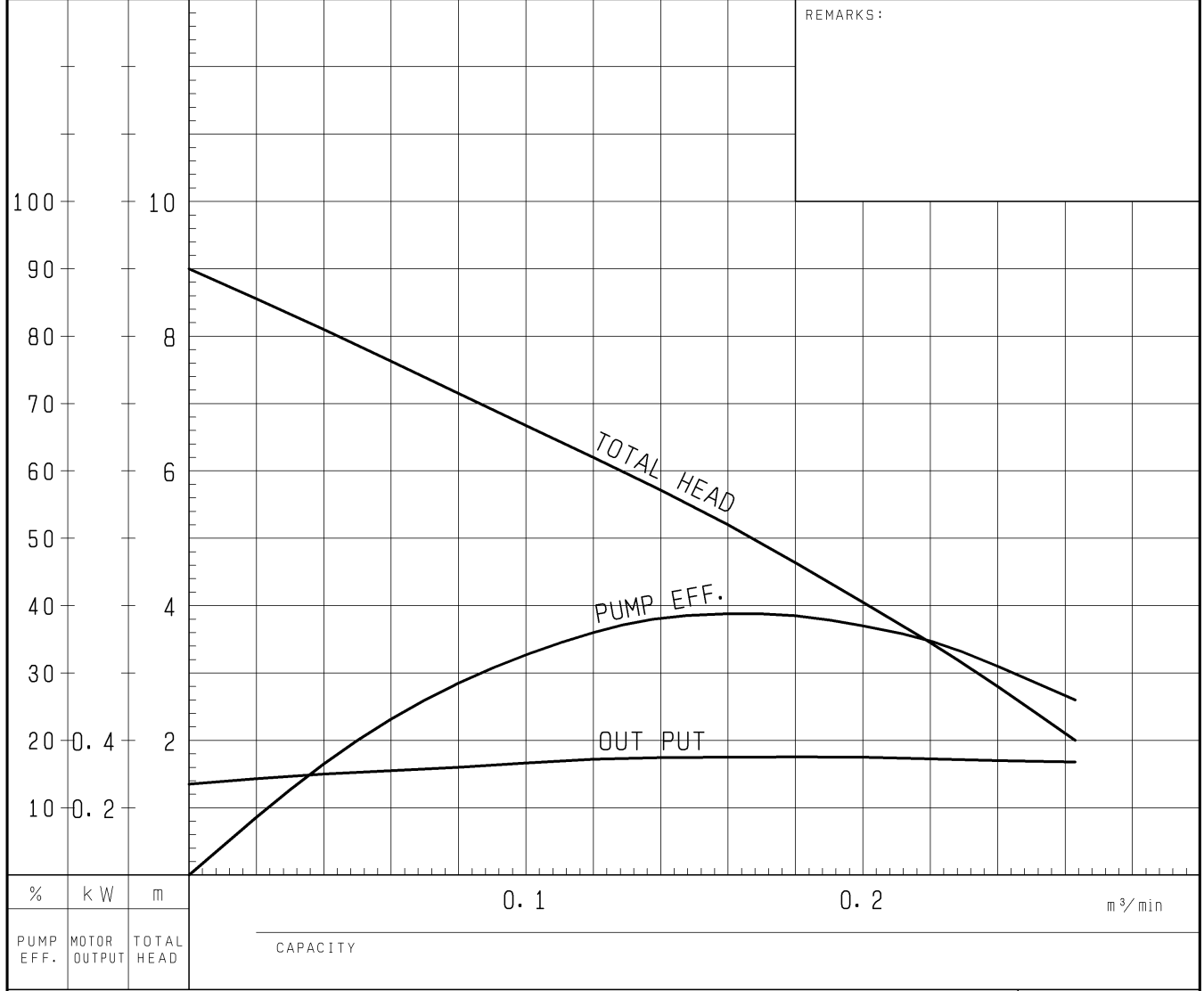
PUMP PERFORMANCE CURVES

TYPE Sewage Submersible Channel Impeller Pump	MODEL 50B2.4 -52 TOS50B2.4 -52	FREQUENCY 50 Hz
--	-----------------------------------	-----------------

CUSTOMER'S NAME _____

EQUIPMENT TITLE _____ NO. _____

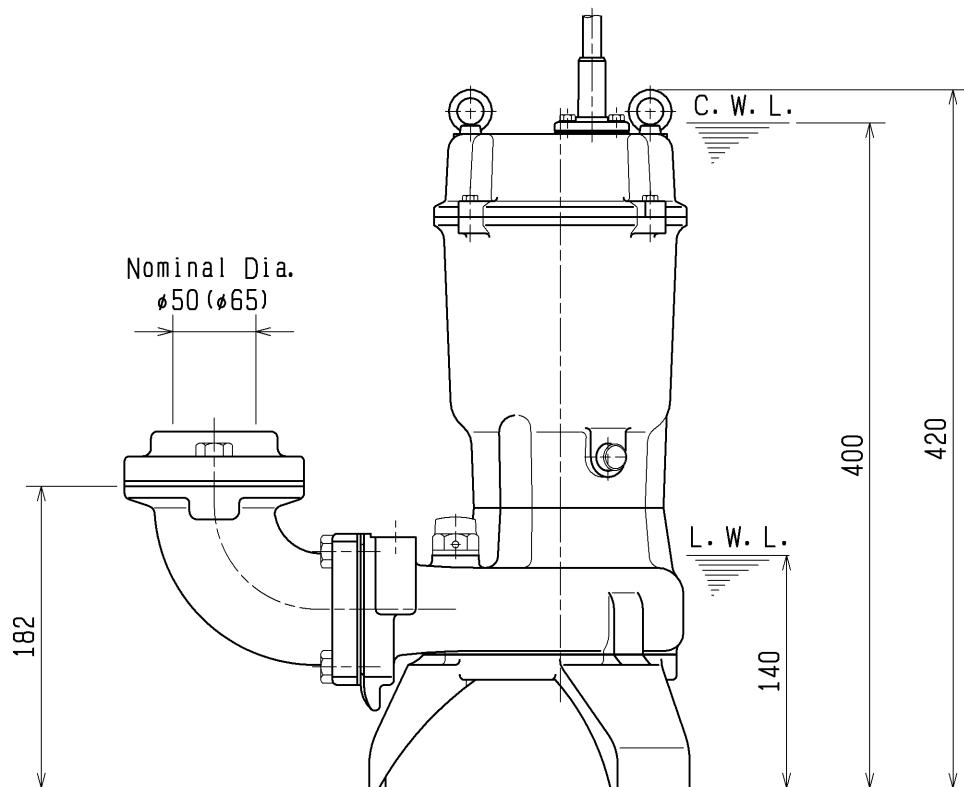
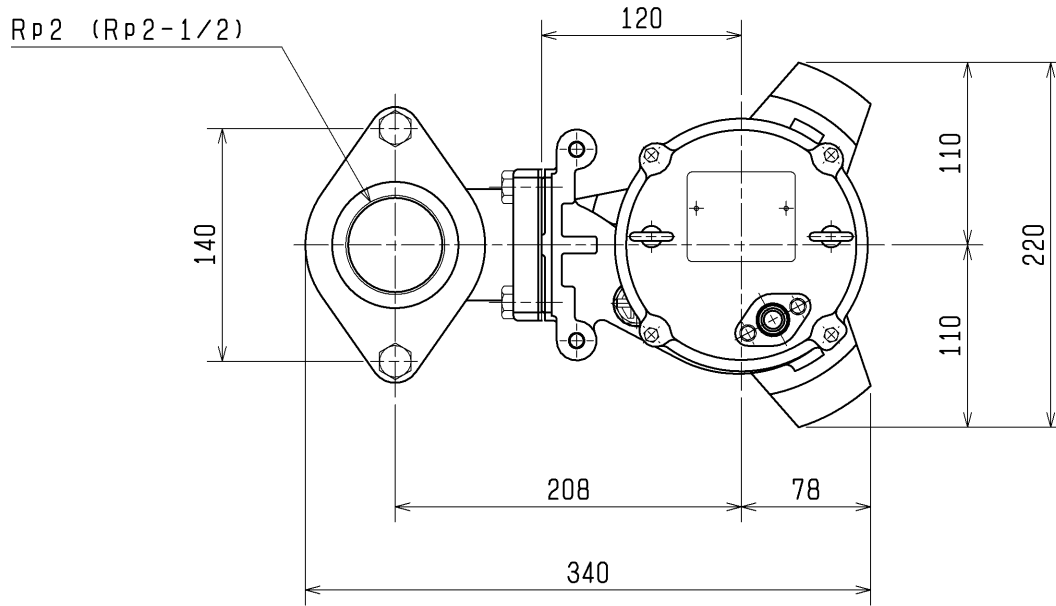
	STANDARD SPECIFICATIONS	REQUIRED SPECIFICATIONS
DISCHARGE BORE	50 mm	mm
TOTAL HEAD	4 m	m
CAPACITY	0.2 m ³ /min	m ³ /min
MOTOR OUTPUT	0.4 kW	kW
PHASE x VOLTAGE	3 φ × V	φ × V
CURRENT	A	A
POLES / REVOLUTION	2 P / S. S. 3000 min ⁻¹	P / min ⁻¹
STARTING METHOD	DIRECT ON LINE	
INSULATION CLASS	E	



TSURUMI MFG. CO., LTD.

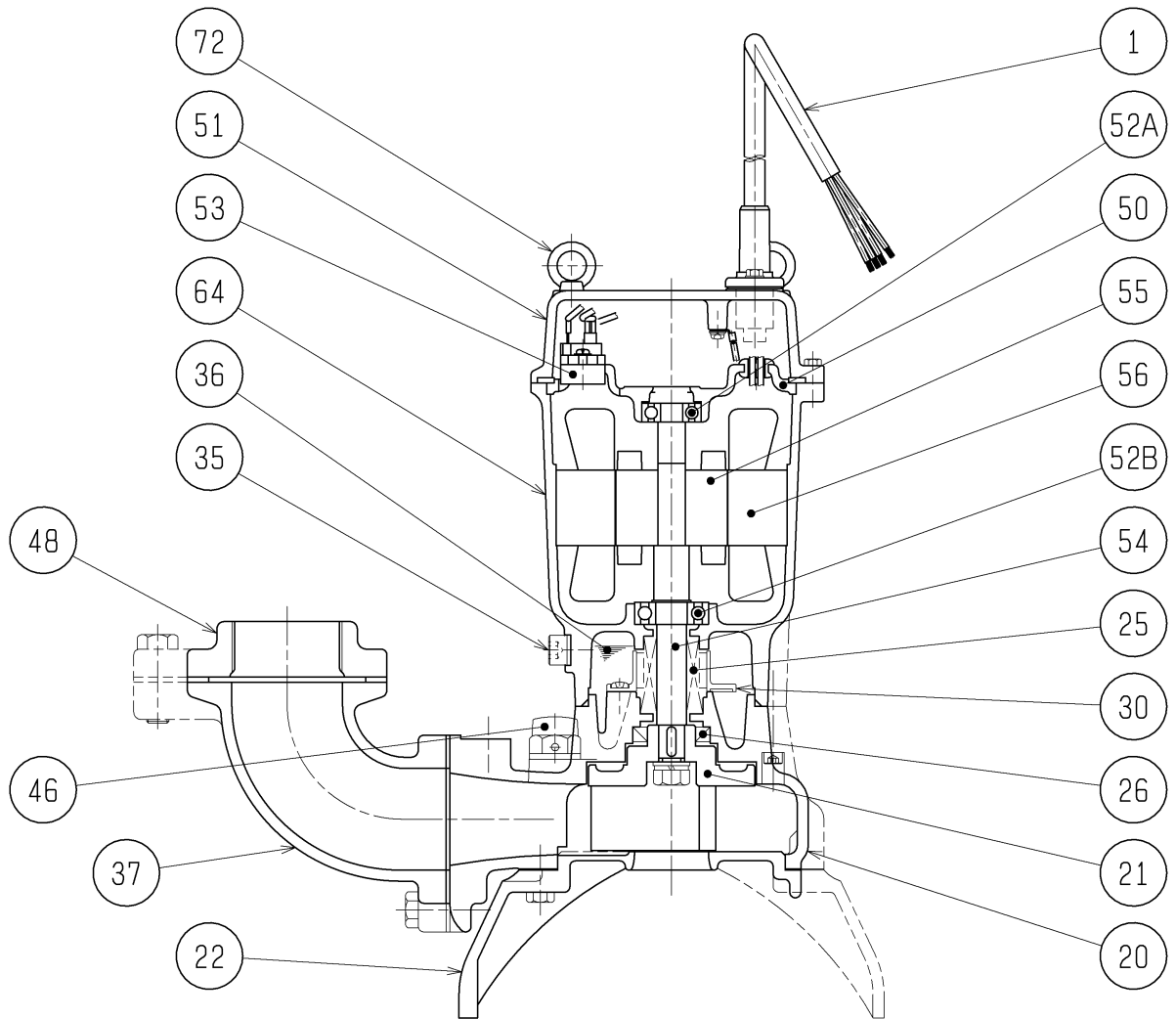
DIMENSION DRAWING		No.	No. A-19578-3
TYPE	Sewage Submersible Channel Impeller Pump	MODEL	50B2.4 -52/62

Approximate Weight(*)
23kg
*excluding cable



C.W.L.:Continuous running Water Level
L.W.L.:Lowest running Water Level

SECTIONAL DRAWING		No.	No. A-19579-2
TYPE	Sewage Submersible Channel Impeller Pump	MODEL	50B2.4 -52/62



REQ. SPECIFICATION	

No.	DESCRIPTION	QTY	MATERIAL / NOTE	No.	DESCRIPTION	QTY	MATERIAL / NOTE
1	Cable	1	PVC Sheath	50	Motor Bracket	1	Gray Iron Casting
20	Pump Casing	1	Gray Iron Casting	51	Head Cover	1	Gray Iron Casting
21	Impeller	1	Gray Iron Casting	52A	Upper Bearing	1	6201ZZC3
22	Suction Cover Stand	1	Ductile Iron Casting	52B	Lower Bearing	1	6203ZZC3
25	Mechanical Seal	1	H-16	53	Motor Protector	1	
26	Oil Seal	1	TC26428	54	Shaft	1	Stainless Steel 420J2
30	Oil Lifter	1	Plastic	55	Rotor	1	
35	Oil Plug	1	Stainless Steel 304	56	Stator	1	
36	Lubricant		Turbine Oil (ISO VG32)	64	Motor Frame	1	Gray Iron Casting
37	Discharge Bend	1	Gray Iron Casting	72	Eye Bolt	2	Stainless Steel 304
46	Air Release Valve	1	Nylon				
48	Screwed Flange	1	Gray Iron Casting				